



File Name: Compact frigidaire refrigerator manual.pdf

Size: 1392 KB

Type: PDF, ePub, eBook

Category: Book

Uploaded: 17 May 2019, 18:54 PM

Rating: 4.6/5 from 627 votes.

Download Now!

Please check the box below to proceed.



I'm not a robot



reCAPTCHA
Privacy - Terms

Book Descriptions:

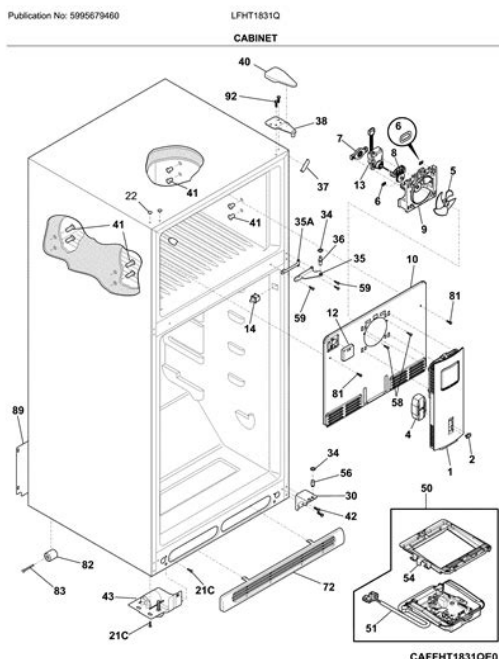
Compact frigidaire refrigerator manual



What's Happening Contact Us Drawer For Fruits And Vegetables. Integrated Handle. Interior Light. Capacity 4.5 Cft Dimensions 500mm X 560mm X 840mm Weight In stock Drawer For Fruits And Vegetables. Integrated Handle. Interior Light. Only logged in customers who have purchased this product may leave a review. Related products Store Locator Careers What's Happening Shop By New Arrivals Electronics Appliances Furniture Spare Parts Damaged Items Sales Deal of the Day Got Questions. Optional Features. Features At A Glance. Major Appliance Warranty. Controls. IMPORTANT SAFETY INSTRUCTIONS DANGER Please read all instructions before using this refrigerator. DANGER Risk of fire or explosion. Flammable refrigerant used. Do not use For your Safety mechanical devices to defrost refrigerator. Read product labels for warnings regarding flammability and other hazards. DANGER Risk of fire or explosion. Flammable refrigerant used. To be repaired only by trained service personnel. Staples can cause severe cuts, and also destroy finishes if they come in contact with other appliances or furniture. Flammable refrigerant used. All safety precautions must be followed. Definitions CAUTION Risk of fire or explosion. Dispose of property in accordance with federal or local This is the safety alert symbol. It is used to regulations. Flammable refrigerant used.CAUTION Risk of fire or explosion due Obey all safety messages that follow this to puncture of refrigerant tubing. Follow symbol to avoid possible injury or death.Flammable refrigerant used.Frigidaire Refrigeration MonFri, 830am 8pm EST Twitter Fan Page Website Correct it, if wrong. Page Count 10 Use your refrigerator only as instructed in this guide. These instructions are not meant to cover every possible condition and situation that may occur. Common sense and caution must be practiced when installing, operating, and maintaining any appliance.<http://djsjgs.com/uploadfile/20201009094743.xml>

- **frigidaire compact refrigerator manual, frigidaire 3.1 compact refrigerator manual, compact frigidaire refrigerator manual, compact frigidaire refrigerator manual download, compact frigidaire refrigerator manual pdf, compact frigidaire refrigerator**

manual instructions, compact frigidaire refrigerator manual 2016, frigidaire 4.5 compact refrigerator manual.



Record Your Model and Serial Numbers Record the model and serial numbers in the space provided below. The serial plate is located on the upper left wall inside the refrigerator or on back of the unit.

Model Number	Serial Number	Purchase Date	Definitions
			This is the safety alert symbol. It is used to alert you to potential personal injury hazards. Obey all safety messages that follow this symbol to avoid possible injury or death. DANGER indicates an imminently hazardous situation which, if not avoided, will result in death or serious injury. Do not use mechanical devices to defrost refrigerator. Do not puncture refrigerant tubing. DANGER Risk of fire or explosion. Flammable refrigerant used. To be repaired only by trained service personnel. Do not puncture refrigerant tubing. CAUTION indicates a potentially hazardous situation which, if not avoided, may result in minor or moderate injury. All safety precautions must be followed. CAUTION Risk of fire or explosion. Dispose of properly in accordance with Federal or local regulations. Flammable refrigerant used. CAUTION Risk of fire or explosion due to puncture of refrigerant tubing; Follow handling instructions carefully. Flammable refrigerant used. Read product labels for flammability and other warnings. The power cord of the appliance is equipped with a three-prong grounding plug for your protection against electrical shock hazards. It must be plugged directly into a properly grounded three-prong receptacle. The receptacle must be installed in accordance with local codes and ordinances. Consult a qualified electrician. Avoid connecting refrigerator to a Ground Fault Interruptor GFI circuit. Never unplug the refrigerator by pulling on the power cord. Unplug the refrigerator before cleaning and before replacing a light bulb to avoid electrical shock. Performance may be affected if the voltage varies by 10% or more. Operating the refrigerator with insufficient power can damage the compressor.

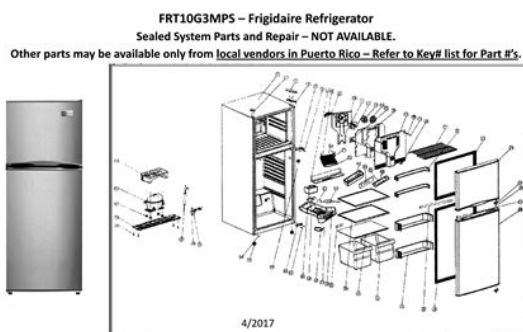
<http://hkmtl.com/upload/evga-geforce-gts-250-manual.xml>



Such damage is not covered under your warranty. Child Safety o Destroy carton, pJastic bags, and any exterior wrapping material immediately after the refrigerator is unpacked. Children should never use these items to play. Cartons covered with rugs, bedspreads, pJastic sheets or stretch wrap may become airtight chambers, and can quickly cause suffocation. Staples can cause severe cuts, and destroy finishes if they come in contact with other appliances or furniture. Before you throw away your old refrigerator Remove doors. Have refrigerant removed by a qualified service technician. Do Not use an extension cord or an adapber plug. Allow space around the unit for good air circulation. Leave a 4 inch 101.6 mm space on the back and 3 inches 76.2 mm on the sides and back of the refrigerator for adequate circulation. Any glue left from the tape can be removed with a mixture of warm water and mild detergent, or touch the residue with the sticky side of tape already removed. Do not remove the serial plate. The exterior walls of the refrigerator may become quite warm as the compressor works to transfer heat from the inside. For this reason it is particularly important in hotter climates to allow enough space for air circulation around your refrigerator. Leveling The refrigerator must have all bottom corners resting firmly on solid floor. The floor must be strong enough to support a fully loaded refrigerator. NOTE It is Very Important for your refrigerator to be level in order to function properly. If the refrigerator is not leveled during installation, the door may be misaligned and not close or seal properly, causing cooling, frost, or moisture problems. To Level Your Refrigerator After removing all interior and exterior packaging materials, use a carpenters level to level the refrigerator from fronttoback. To allow door to close and seal property, DO NOT let food packages extend past the front of shelves.

Shelf Front o o o Install the refrigerator in the coolest part of a dry and ventilated room, out of direct sunlight and away from heating ducts or registers. Do not place the refrigerator next to heatproducing appliances such as a range, oven or dishwasher. Level the refrigerator so the door closes tightly. Do not overcrowd the refrigerator or block cold air vents. Doing so causes the refrigerator to run longer and use more energy. Shelves should not be lined with aluminum foil, wax paper or paper toweling. Remove as many items as needed at one time and close the door as soon as possible. Temperature Control The temperature control is located inside the refrigerator and in the freezer comparbnent on some models. Afber each movement, allow 24 hours for the unit to adjust, ff the unit is still not cold enough, repeat until desired temperature is achieved. Afber each movement, allow 24 hours for the unit to adjust, ff the unit is still not warm enough, repeat until desired temperature is achieved. To remove the basket, pull out and lift up. Interior Light Some models The light comes on automatically when the door is opened. To replace the light bulb, turn the temperature control to OFF and unplug the electrical cord. Replace the old bulb with a bulb of the same wattage. Rinse and dry. Wring excess water out of the sponge or cloth when cleaning in bhe

area of the controls, or any electrical parts. Wash the removable parts with the baking soda solution mentioned above, or mild detergent and warm water. Rinse and dry. Never use metallic scouring pads, brushes, abrasive cleaners, or alkaline solutions on any surface. Do not wash removable parts in a dishwasher. Cleaning the Outside Wash the cabinet with warm water and mild liquid detergent. Rinse well and wipe dry with a clean soft cloth. Also, protect the outside of the refrigerator with a blanket or similar item. Before you begin, ensure that the appliance is unplugged and empty.



<http://schlammatlas.de/en/node/21363>

Adjust the two leveling legs on the front of the refrigerator to their highest level by turning counter clockwise, it is recommended that two 2 people perform this task. DO NOT lay the appliance completely flat as this may damage the coolant system. First Step Remove the hinge cover, Unscrew and remove the hinge bracket. Note You reuse the screw from the pin assembly that is removed in this step when attaching the new assembly. Third Step Remove the screws from the middle hinge. Lift the refrigerator door up and away from the appliance. Ensure that the door is aligned horizontally and vertically, and that the gasket seals on all sides before attaching the top hinge. Attach the top hinge and replace the hinge cover. IMPORTANT. Double check that both doors are aligned correctly and gaskets are sealed on all sides. If necessary, readjust the leveling legs. Turn control knob to a warmer setting. Allow several hours for the temperature to stabilize. Clean or change gasket. SOUND AND NOISE Louder sound levels when Refrigerator is on, Modern refrigerators have increased storage capacity and more stable temperatures. When the surrounding noise level is low, you might hear the compressor running while it cools the interior. Sound will level off or disappear as Refrigerator compressor pressures during the start of the refrigerator continues to run. For one year from your original date of purchase, Electrolux will pay all costs for repairing or replacing any parts of this appliance that prove to be defective in materials or workmanship when such appliance is installed, used and maintained in accordance with the provided instructions. If service is performed, it is in your best interest to obtain and keep all receipts. Service under this warranty must be obtained by contacting Electrolux at the addresses or phone numbers below. This warranty only applies in the USA and Canada. Product features or specifications as described or illustrated are subject to change without notice.

<http://precisionheavyhaul.com/images/cara-update-manual-ipod.pdf>



Manufacturer Video Next page Upload your video Video Customer Review The 5 Best Stainless Steel Compact Refrigerators See full review BestReviews Onsite Associates Program Featuring a 2 Doors configuration with a freezer compartment on top and a fridge compartment at the bottom, a built in bottle opener, an adjustable thermostat, a slide out shelf and adjustable feet, it will allow you to easily store your snacks and beverages to keep them fresh at all time. In order to navigate out of this carousel please use your heading shortcut key to navigate to the next or previous heading. To calculate the overall star rating and percentage breakdown by star, we don't use a simple average. Instead, our system considers things like how recent a review is and if the reviewer bought the item on Amazon. It also analyzes reviews to verify trustworthiness. Please try again later. **randy 3.0 out of 5 stars** Secondly one of the main reasons why I got this one over another was is was SUPPOSEDLY you could reverse the doors. Technically that is true BUT they forgot to mention you cant move the chrome plastic handles to the opposite side. Very disappointing. And it showed up damaged. Fairly confident its all cosmetic and the unit should work time will tell on that. Realisticly this was bought because of looks so im disappointed bigly. I also will say the freezer size is big enough to hold ice cream. Another question i couldnt find an answer to. Never got them out of box to use. Back in the day when things were made in the good ole USA it would have been made of steel.

<https://www.avenueroadadvertising.com/wp-content/plugins/formcraft/file-upload/server/content/files/16283dcc4d5054---Bth-199-970-manual.pdf>

autoescuelatosal.com/galeria/files/comfort-master-apu-owners-manual.pdf

<https://labroclub.ru/blog/boss-amplifier-manual>