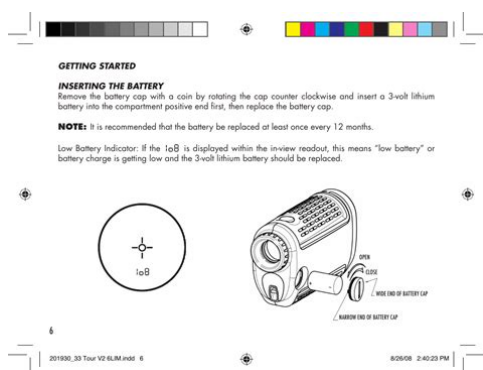


bushnell v2 owner s manual



File Name: bushnell v2 owner s manual.pdf

Size: 3634 KB

Type: PDF, ePub, eBook

Category: Book

Uploaded: 10 May 2019, 18:44 PM

Rating: 4.6/5 from 664 votes.

Status: AVAILABLE

Last checked: 10 Minutes ago!

In order to read or download bushnell v2 owner s manual ebook, you need to create a FREE account.

[**Download Now!**](#)

eBook includes PDF, ePub and Kindle version

[Register a free 1 month Trial Account.](#)

[Download as many books as you like \(Personal use\)](#)

[Cancel the membership at any time if not satisfied.](#)

[Join Over 80000 Happy Readers](#)

Book Descriptions:

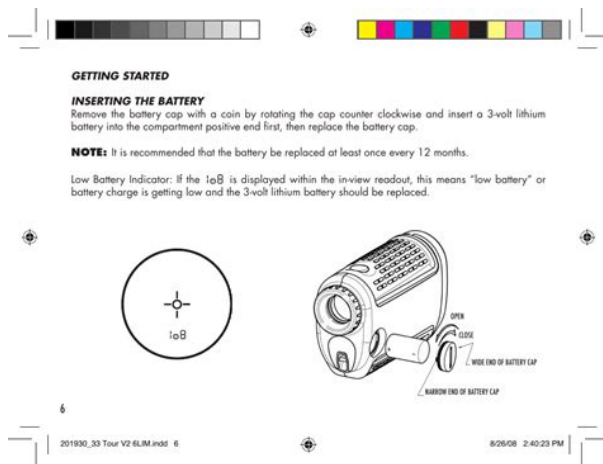
We have made it easy for you to find a PDF Ebooks without any digging. And by having access to our ebooks online or by storing it on your computer, you have convenient answers with bushnell v2 owner s manual . To get started finding bushnell v2 owner s manual , you are right to find our website which has a comprehensive collection of manuals listed.

Our library is the biggest of these that have literally hundreds of thousands of different products represented.



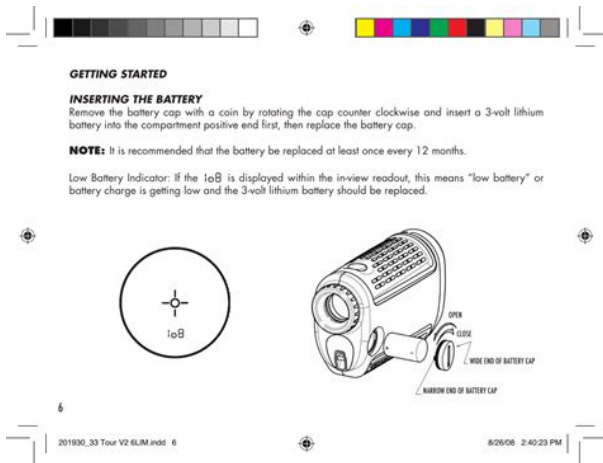
Book Descriptions:

bushnell v2 owner s manual



View online or download Bushnell Tour V2 User Manual, Owner's Manual. If you need the user manual of a Bushnell product, you can look for it here. View and Download Bushnell Tour V2 owner's manual online. Bushnell Laser Rangefinder Owner's Manual. The Bushnell ImageView binocular takes the technology of digitalThe ImageView will imprint the date and time in the bottom right. Page 8 Using the Operational Modes Bold indicates default settings. Mode Icon Settings Description. Page 9 Using the Operational Modes. Line 60 or 50 60 Hz, 50 Hz Set to match the. Page 10 Using the Operational Modes. Page 11 Using the ImageView with Your ComputerWhen you are ready to save yourAs individual eyesight varies from one person to another, most Bushnell binoculars have. Page 16 diopter setting for your eyes for future reference. EYECUPS Figure 3. Your Bushnell binocular is fitted with rubber rolldown. Page 17 6. Take the batteries out of your ImageView if you are not going to use it for a longPage 19 FCC Note. This equipment has been tested and found to comply with the limits for a Class B digital device. Page 20 For further questions or additional information please contact. Sophisticated circuitry and a high speed clock are used to instantaneo u s l y calculate distances, by measuring the time it takes for each pulse to travel from the rangefinder, to the target, and back. The unit will only display even numbers. The maximum range of the instrument depends on the reflec t i v i t y of the target. Note You will get both longer and shorter max imum distances depending on the reflective properties of the particular target and the environmental conditions at the time the object is being distanced to. The color, surface finish, size and shape of the target all effect reflec t i v i t y and range. The brighte r the color, the longer the range. Red is highly reflective, for example, and allows longer ranges than the color black, which is the least reflective color.<http://therockettoday.com/images/dell-laptop-latitude-d630-user-manual.xml>

- **bushnell v2 owner s manual, bushnell v2 owner s manual transmission, bushnell v2 owner s manual pdf, bushnell v2 owner s manual download, bushnell v2 owner s manual free.**

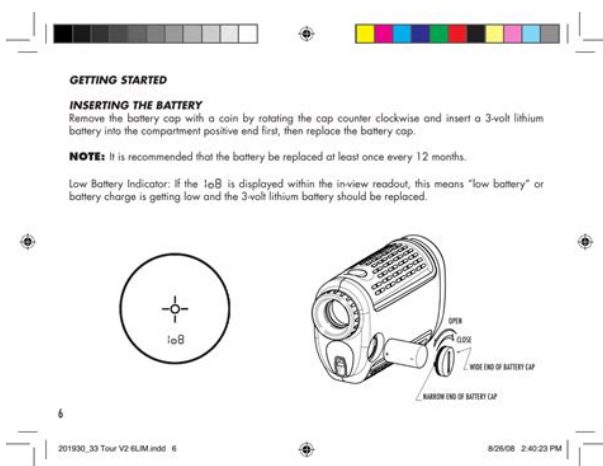


A shiny finish provides more range than a dull one. A small target is more difficult to range than a larger target. The angle to the target also has an effect. Shooting to a target at a 90 degree angle where the target surface is perpendicular to the flight path of the emitted energy pulses provides good range while a steep angle on the other hand, provides limited ranging. In addition, lighting conditions e.g. the amount of sunlight will affect the ranging capabilities of the unit. The less light e.g. overcast skies the further the unit's maximum range will be. Conversely, very sunny days will decrease the unit's maximum range.

OPERATIONAL SUMMARY While looking through the monocular, depress the power button once to activate the in-view display system LCD. You can depress the power button again at any time to distance to a new target. As with any laser device, it is not recommended to directly view the emissions for long periods of time with magnified lenses.

FEATURES The YARDAGE PRO's sophisticated circuitry allows you to select between various units of measure and targeting modes. In addition, your YARDAGE PRO's LCD incorporates illuminated indicators that advise you when the laser is active, what the precision tolerances of a specific measurement are and when the battery charge is low. The unit of measure indicators are located in the upper right portion of the LCD. To select between yards and meters look through the monocular, depress the "mode" button front button of the unit and hold it down for approximately 5 seconds. If you are changing from yards to meters, a change in unit of measure will be indicated by the illumination of the METER indicator while the YARD indicator is turned off. If you are changing from meters to yards, the opposite will occur. Used for moderately reflective targets that are typical of most distancing situations.

s. <http://www.asclzyarskyklub.sk/userfiles/dell-laptop-latitude-d600-manual.xml>

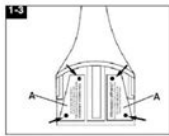


Note If the user encounters difficulty ranging to targets in the standard mode, the other modes listed below can be used. The minimum distance in the standard mode is 20 yards. This mode allows

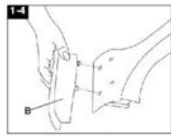
the range to be continuously updated as long as the Power button remains depressed. By selecting the rain mode, feedback from energy pulses reflecting off precipitation will be ignored and an uncontaminated measurement obtained. To select between these modes, while looking through the monocular, depress and release the mode button. When the dashes start to fade away, it means the battery charge is getting low and the 4 AAA alkaline batteries should be replaced. Inherent in the manufacturing process are small black spots that appear in the optical system. These are a natural characteristic of the LCD, cannot be fully eliminated in the manufacturing process and do not affect the distancing performance of the unit. Backlight A green LED backlights the LCD for approximately 5 seconds after a range has been obtained. CLEANING Gently blow away any dust or debris on the lenses or use a soft lens brush. To remove dirt or fingerprints, clean with a soft cotton cloth, rubbing in a circular motion. Use of a coarse cloth or unnecessarily rubbing may scratch the lens surface and eventually cause permanent damage. For a more thorough cleaning, photographic lens tissue and photographic type lens cleaning fluid or isopropyl alcohol may be used. Always apply the fluid to the cleaning cloth never directly on the lens. Battery Cap. Radar Icon. Power Button.

The Speedster III is a precision speedometer. To ensure optimal performance, insert the battery. Insert both batteries positive end first and replace. For best results with maximum accuracy, keep your target's direction of travel. The radar icon is no longer shown on the display, and the display indicates the highest speed that was recorded. To check the speed of the target again. NOTE The Speedster has an automatic shutoff feature to extend battery life. After 10 minutes of use, when a battery symbol appears on the lower right hand corner of the display, this indicates that the batteries should be replaced. Remove the batteries when storing your Speedster for a long period. To acquire the speed of a target, with the radar icon, this indicates the Doppler Radar is functioning. The radar will continue to be active searching for speed until the trigger is released. Upon release of the trigger, the speed of the target is displayed. There are certain mathematical properties of Doppler Radar that affect the accuracy of your Bushnell Speedster III. Please read "COSINE EFFECT ON TARGET VELOCITY" below. To ensure optimum accuracy, please read the following: Accuracy. Battery Type. Operating Time. Operating Temperature Range. Radar Transmitter. Data transmitter. Ball 10110 MPH, up to 90 Feet. Car 10200 MPH, up to 1500 Feet. In the event of a defect under this warranty, we will, at our option, repair or replace the product. This warranty does not cover any return made under this warranty must be accompanied by the items listed below. An explanation of the defect. Proof of Date Purchased. Product should be well packed in a sturdy outside shipping carton, to prevent damage in transit. Attn. Repairs Overland Park, KS 66214. Attn. Repairs Richmond Hill, Ontario L4B 2M9. For products purchased outside the United States or Canada please contact your local dealer. In Europe you may also contact Bushnell at. Bushnell Germany GmbH. European Service Centre. Mathias Bruggen Str. 80. D50827 Koln. You may have other rights which vary from country to country. Caution Please read the following before using the Speedster III radar gun.

Cleaner Assembly



Remove cardboard (A) and four screws from handle section. Discard cardboard, but keep screws for assembly (Figs. 1-7 and 1-8).



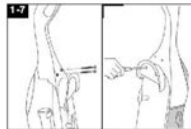
Snap tabs on carry handle (B) into holes on handle section.



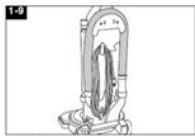
Push switch down to OFF position.



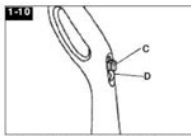
Slide handle section onto back of handle.



Push screws into holes on back of handle (Fig. 1-7) and carry handle (Fig. 1-8). Tighten screws securely with a Phillips screwdriver.



Place hose on holder.



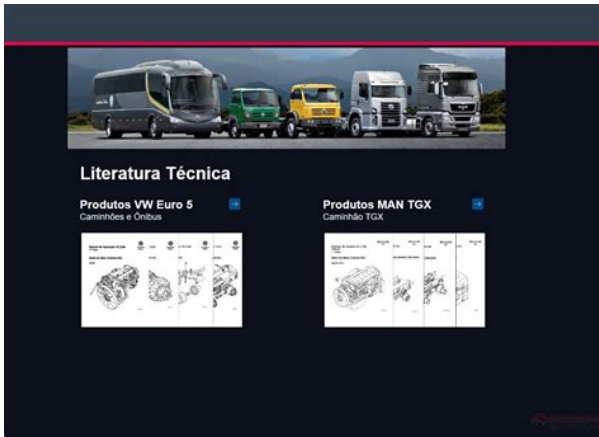
Pull switch lock (C) above OFF/ OFF switch (D) straight out. Dispose of switch lock. If switch lock has come off during assembly, make sure switch is in OFF position (down) before plugging into electrical outlet.

4

<https://www.thebiketube.com/acros-3l-toyota-diesel-engine-manual>

The Speedster III does not contain any user serviceable parts. Repairs should only be made by a Bushnell. Authorized repairs center. Unauthorized repairs or modifications could result in permanent damage to this product. This product has been tested and confirmed to operate within FCC guidelines. However, any changes or modifications to the product not expressly approved by Bushnell, Inc. If the product should become damaged and the internal circuitry exposed, please do not attempt to repair it. The Health Industry Manufacturers Association recommends that a wireless radio transmitter be turned off and do not use the Speedster III in health care facilities when such facilities instruct you to do so. Some medical equipment has been found to be sensitive to radio frequency interference. Be sure to turn off the Speedster III in any areas where posted notices say to turn off cell phones or commercial airlines do not permit the use of non-approved transmitters on board. Do not operate the Speedster III in areas containing any potentially explosive gases. Do not remove the batteries in the presence of potentially explosive gases as sparks from the batteries could ignite the gases. This product has been found to comply with the safe RF exposure limits as adopted by the FCC in 1996. Bushnell Outdoor Products PDF Version 1.5. Linearized Yes. Create Date 20100714 1135020500. Metadata Date 20100714 1135060500. Modify Date 20100714 1135060500. Creator Tool Adobe InDesign CS4 6.0.4. Thumbnail Format JPEG. Thumbnail Width 256. Thumbnail Height 256. Thumbnail Image Binary data 7778 bytes, use b option to extract. Instance ID uuid75f67f336d1f4f5c83f3f9099fa44065. Document ID xmp.did30D9681620151168AEC7D689871024AC. Original Document ID xmp.did74117FF720071168A9618282485BF2CF. Rendition Class proofpdf. Derived From Instance ID xmp.iid30D9681520151168AEC7D689871024AC. Derived From Document ID xmp.did30D9681320151168AEC7D689871024AC.

[GTS-TRANSPORT.COM/images/br-3021-shock-manual.pdf](https://www.thebiketube.com/acros-3l-toyota-diesel-engine-manual)



Derived From Original Document ID xmp.did74117FF720071168A9618282485BF2CF. Derived From Rendition Class default. Manifest Link Form ReferenceStream, ReferenceStream, ReferenceStream, ReferenceStream, ReferenceStream, ReferenceStream, ReferenceStream, ReferenceStream. Manifest Placed X Resolution 72.00, 72.00, 300.00, 300.00, 72.00, 72.00, 72.00, 72.00. Manifest Placed Y Resolution 72.00, 72.00, 300.00, 300.00, 72.00, 72.00, 72.00, 72.00. Manifest Placed Resolution Unit Inches, Inches, Inches, Inches, Inches, Inches, Inches, Inches. Doc Change Count 1056. Producer Adobe PDF Library 9.0. Trapped False. Page Count 8. Creator Adobe InDesign CS4 6.0.4. You will find the current user manual for Bushnell riflescopes in the details of individual products. We also recommend looking through our discussion forum which serves to answer questions and solve problems with bushnell products. A useful zoom range provides the magnification required for medium to long range accuracy wi. This 2nd focal plane reticle has four. A useful zoom range provides the magnification required for medium to long range accurac. A useful zoom range provides the magnification required for medium to long range accurac. A useful zoom range provides the magnification required for long range accuracy, while. A useful zoom range provides the magnification required for long range accuracy, while. A useful zoom range provides the magnification required for medium to long range accuracy wi. A useful zoom range provides the magnification required for medium to long range accuracy wi. A useful zoom range provides the magnification required for medium to long range accuracy wi. Try Google Search! However, when I charge it, the red light become green for a second and then still on the charge starts to flash red again. The manual is automatically downloaded on the desktop or in the file downloads of your computer. The same way is also possible if you prefer to search by choosing the menu Brands.

GUESTHOUSECZESTOCHOWA.COM/images/br-600-boss-manual.pdf



To view the documents, you must have Adobe Reader installed on your computer. To download free the most recent version of this software click here. ModeThe TOUR V2 WITH PINSEEKERS Advanced the rangefinder, to the target, and back. OPEN CLOSE Wide END Of BattEry CaP. NarROW END Of BattEry CaPThe crosshairs surrounding the circle will disappear once the power button has been released i.e. the laser is no longer being transmitted. Once the device has shut off, the unit will always default back to the last mode used. Golf Example Lets say you are a strong golfer with a 300 yard shot. At a 20 degree slope the Pin would be 50 feet above you.Replace the battery with a good quality T 3 volt lithium battery. If target range new range reading is displayed. Specifications, instructions, and the operation of these products are subject to change without notice.ExtrEMO aNCHO taPa dE Pilas ExtrEMO EstrECHOIn altri termini, mandereste la pallina in cima ad un palazzo di 5 piani!ModoExtrEMidadE larGa. ExtrEMidadE EstrEita. Spartan Ghost Cam Verizon Archived Reviews Archived Owners Manuals Login USD CAD AUD GBP EUR JPY If you dont see it here, try looking on the product page for that particular camera. The current cameras can be found in our game cameras for sale listings. Using the online preview, you can quickly view the contents and go to the page where you will find the solution to your problem with Bushnell Tour V2. To start viewing the user manual Bushnell Tour V2 on full screen, use the button Fullscreen. However, if you do not want to take up too much of your disk space, you can always download it in the future from ManualsBase. The option to print the manual has also been provided, and you can use it by clicking the link above Print the manual. You do not have to print the entire manual Bushnell Tour V2 but the selected pages only. paper. If you want to quickly view the content of pages found on the following pages of the manual, you can use them.

This booklet will help you achieve optimum performance by explaining its adjustments and features as well as how to care for this precise laser rangefinding optical instrument. To ensure optimal performance and longevity, please read these instructions before using your TOUR V2.The TOUR V2 WITH PINSEEKER's Advanced Digital microprocessor and ASIC chip ApplicationSpecific Integrated Circuit results in instantaneous and accurate readings every time. Sophisticated digital technology instantaneously calculates distances by measuring the time it takes for each pulse to travel from the rangefinder, to the target, and back. RANGING ACCURACY The rangingNOTE It is recommended that the battery be replaced at least once every 12 months. Low Battery Indicator If the is displayed

within the inview readout, this means "low battery" or battery charge is getting low and the 3volt lithium battery should be replaced. OPEN CLOSe WidOPERATIONAL SUMMARY While looking through the 5x eyepiece, depress the power button once to activate the inview Liquid Crystal Display LCD. Place the aiming circle located in the center of the field of view upon a target at The unit of measure indicators are located in the lower right portion of the LCD. To select between yards and meters, quickly press and release the POWER button to turn on the unit on top of the unit, look through the eyepiece, depress the "MODE" button left side of the eyepiece and hold it down for approximately 5 seconds. If you are changing from yards to meters, a change in unit of measure will bNext, align the aiming circle reticle onto the flag that you want distance to. Next, press and hold the POWER button and move the laser slowly over the flag or desired object until a circle surrounds the flag indicator. If the laser beam recognized more than one object i.e.

<http://stroynerud-sm.ru/wp-content/plugins/formcraft/file-upload/server/content/files/1626e5fbc49681---400-polaris-sportsman-manual.pdf>

flag and background trees, distance of the flag will be displayed and a circle will surround the PinSeeker indicator informing the user that distance to theOnce the range is displayed, continue to hold the POWER button down for approximately 2 seconds while holding the aiming circle on the flag and keeping the unit as steady as possible so as to allow the inclinometer enough time to measure slope. Then release the POWER button. Once you havMost are not well versed to accurately determine slope angle. For example, most golf courses average slope is approximately 4 degrees. A large slope at a golf course is generally no more than 8 degrees. Of course this can vary, and that is why this device will measure slope from 20 to 20 degrees. Some real world examples may help clarify.Inherent in the manufacturing process are small black spots that appear in the optical system. These are a natural characteristic of the LCD and cannot be fully eliminated in the manufacturing process. They do not affect the distanciTo remove dirt or fingerprints, clean with a soft cotton cloth, rubbing in a circular motion. Use of a coarse cloth or unnecessary rubbing may scratch the lens surface and eventually cause permanent damage. For a more thorough cleaning, photographic lens tissue and photographictype lens cleaning fluid or isopropyl alcohol may be used.Replace the batter y with a good quality 3 volt lithium battery.These limits are designed to provide reasonable protection against harmful interference in a residential installation. This equipment generates, uses and can radiate radio frequency energy and, if not installed and used in accordance with the instructions, may cause harmful interference to radio communications. However, there is no guarantee that intCe manuel vous aidera a atteindre la performance optimale en vous expliquant les réglages et caracteristiques ainsi que l'entretien de cet appareil de telemetrie a laser de haute precision.

Pour assurer une performance et une duree de vie optimales, veuillez lire les instructions avant d'utiliseSon microprocesseur numerique avance et la puce CIAS Circuits integres a application specifique du TOUR V2 avec PINSEEKER produisent chaque fois des releves de distances precises et instantanees. La technogenie numerique sophistiquee calcule instantanement les distances en mesurant le temps requis par le parcours allerretour de chNOTE Il est recommande de remplacer la pile au moins une fois tous les 12 mois. Indicateur de batterie faible Si " "est affiche lors de l'affichage, ceci indique que la charge de la pile est faible et qu'elle doit etre remplacee. OUvr. Something went wrong. View cart for details. This is a multilingual instruction manual. There are 14 pages of English instruction. All inside pages are intact. Some pages have light creasing and some curling from storage. Including the instruction manual there is also two accessories including the lens wipe and wrist strap.User Agreement, Privacy, Cookies and AdChoice Norton Secured powered by Verisign. Ask your question here. Provide a clear and comprehensive description of the issue and your question. The more detail you provide for your issue and question, the easier it will be for other Bushnell TOUR V3 owners to properly answer your question. Ask a question What else can I try It

always returns to the above screen after I try to reboot by holding the FIRE button down for 1 min. Help is needed I incorrectly thought that the rangefinder would go blank when battery needed changing. I just hope it lasts. Help is needed Have removed battery and held button for 5 seconds with no results. Also the yardage seems to be off.wondering if it is measuring in meters and not yardage. Can I request an electronic user manual Thanks. Bill Triboletti When I focus on the target it wont zero in This manual comes under the category Rangefinders and has been rated by 3 people with an average of a 7.7.

This manual is available in the following languages English, German, French, Spanish, Italian. Do you have a question about the Bushnell TOUR V3 or do you need help. Ask your question here Bushnell TOUR V3 specifications Brand ManualSearcher.com ensures that you will find the manual you are looking for in no time. Our database contains more than 1 million PDF manuals from more than 10,000 brands. Every day we add the latest manuals so that you will always find the product you are looking for. Its very simple just type the brand name and the type of product in the search bar and you can instantly view the manual of your choice online for free. ManualSearcher. com If you continue to use this site we will assume that you are happy with it. Read more Ok. Download an official Bushnell user manual in which you will find instructions on how to install, use, maintain and service your product.A simple reticle and icons combined with an adjustable intensity helps to streamline the ranging process. The lightweight and durable chassis is wrapped in a slipresistant rubber armoring, while the interior is nitrogenfilled and Oring sealed to be waterproof and fogproof in all weather conditions.Please send it to us and help us expand our library of instruction manuals. Add your rating and experience with the product. Let us know and we will try to add the missing manualTrying to register with Rand Mcnally.It shows up on bluetooth list on phone as being paired. Please help! My tv logic vfm 055a monitor is giving signal issues. Initially ot works well on shoot. But later after 45 mins of use it suddenly leaves the signal leaving the screen blank and then gets it back on. This happens frequently. Cab you plz suggest.Our instructions database is constantly updated and supplemented with new products. Looking for instruction manuals Ask us. Stay up to date with Roland news, artists, promotions, events, and more. Provides an overview of key features, functions and operational tips.

The BOSS Worldwide Social Network keeps you connected to the latest products, exciting events, and much more. Stay up to date with Roland news, artists, promotions, events, and more. Provides an overview of key features, functions and operational tips. The BOSS Worldwide Social Network keeps you connected to the latest products, exciting events, and much more. I also consent to Sirius XM Canada Inc. 135 Liberty Street, 2nd Floor, Toronto, Ontario M6L 1A7 sending me such communications in the event that I am or become an owner of a Hyundai vehicle, which is supplied with a Sirius XM trial subscription.Unfortunately we aren't able to complete your request right now. Hyundai Auto Canada Corp.By clicking "Get Your Local Price" below you agree to the dealer and Hyundai Auto Canada Corp.I also consent to Sirius XM Canada Inc. 135 Liberty Street, 2nd Floor, Toronto, Ontario M6L 1A7 sending me such communications in the event that I am or become an owner of a Hyundai vehicle, which is supplied with a Sirius XM trial subscription. I understand that at any time I may withdraw my consent to receiving emails and other commercial electronic messages. I consent to Hyundai Auto Canada Corp.Hyundai of Canada may also contact you by phone as a follow up to your requested test drive. Each dealer operation is a separate legal entity independent of Hyundai of Canada. The best way to experience a Hyundai is to take one for a test drive. You can charge from home or work, and never stop for gas again. Something else you'll find impressive is its available technology including a wireless charging pad, Android Auto TM and Apple CarPlay TM. Actual range may vary based on driving conditions and the addition of certain vehicle accessories. Based on manufacturer testing and used for comparison purposes only. Delivery and Destination charge includes freight, P.D.E. and a full tank of gas. Any dealer admin fees, applicable license fees, insurance, registration, and taxes extra.

Charges may vary by Dealer. Preorders are available for a limited time, and subject to change or cancellation without notice. Preorders are not available in some areas. A preorder is not a sale agreement and does not obligate Hyundai Auto Canada Corp. Additional conditions and restrictions may apply. The amount of the Incentive, its terms and conditions, and its eligibility or application varies by Province, model and trim level, MSRP, payment method, term, and any other criteria that may be established by each Province. Incentive applied after applicable taxes in Ontario and Quebec, and before applicable taxes in British Columbia. The Incentive programs are administered independently by each Province and are subject to cancellation or change. Hyundai Auto Canada Corp. Incentive information is provided for informational purposes only. Conditions and limitations apply. Hyundai Auto Canada Corp. By clicking "Submit" below you agree to the dealer and Hyundai Auto Canada Corp. When you combine its impressive range with its bold SUV style, the limited number of KONA electric vehicles coming this fall are going to go fast. At that time, your dealer will be in contact to inform you that your vehicle is on the way and to obtain final confirmation of your order. Hyundai Auto Canada Corp. By clicking "Submit" below you agree to the dealer and Hyundai Auto Canada Corp. Delivery and Destination charge includes freight, P.D.E. and a full tank of gas. Other Price adjustment includes the before tax equivalent of the cash back price adjustment. Refundable deposit may be required. Customers must preorder by placing a revocable sold order at a Hyundai dealership. Offer available to qualified customers who preorder a new 2018 Kona before April 2, 2018. Offer must be redeemed no later than April 2, 2018. Customer must complete purchase upon the vehicle being made available in Canada but no later than April 2, 2018.

Customers must be qualified by the designated financial institutions in order to be eligible for the program. Offer cannot be combined or used in conjunction with any available offers. Offer is nontransferable and cannot be assigned. Offer available for a limited time, and subject to change or cancellation without notice. Additional conditions and restrictions may apply. Hyundai Auto Canada Corp. By clicking "Submit" below you agree to the dealer and Hyundai Auto Canada Corp. If Future Value Financing is selected, the monthly payment shown is for 60 months. However, the amount being financed including taxes, levies and fees is amortized over an 84 month period and the Remaining Principal Balance is due at the end of the 60 month period. Dealer admin fees may vary by dealer. Delivery and Destination charge includes freight, P.D.E., and a full tank of gas. Applicable license fees, insurance, registration, and taxes extra. Any dealer admin fees, applicable taxes, lien registration fees, license and insurance extra. Prices shown are suggested retail selling prices only, actual costs may vary. Installed options may vary by dealer. Delivery and Destination includes freight, P.D.E. and a full tank of gas. Applicable taxes, lien registration fees, license and insurance extra. Delivery and Destination includes freight, P.D.E., and a full tank of gas. Dealer may sell for less. Price adjustments applied before taxes. Offer cannot be combined or used in conjunction with any other available offers. No vehicle trade-in required. The Hyundai Smart Rate Program is available to qualified customers who purchase a new eligible vehicle during the program period based upon the actual retail date of the vehicle. Select "See prices with sales tax" for the total monthly lease payment including taxes and levies. Any dealer admin fees, applicable taxes, lien registration fees, license, and insurance extra. Leasing offers available on approved credit from Hyundai Financial Services.

Applicable taxes, lien registration fees, license, and insurance extra. For calculation purposes only, our accessory pricing includes the estimated cost of installation if necessary. Prices do not include painting if required e.g. Spoilers. However, the cost of doing business varies in different parts of the country, therefore the installed price may not be the exact cost of installation depending on the dealership. Please see your local Hyundai dealer for complete details. When you purchase a vehicle with a loan, a financial institution pays the selling dealer on your behalf; in return you agree to pay back the money borrowed over a specified period of time typically up to five years. Future Value Financing is a great alternative to a traditional purchase financing or leasing. With the Future Value

Financing option, you get to take advantage of a lower monthly payment and have the advantage of owning your vehicle with no kilometers restrictions just like traditional purchase finance. How does Future Value Financing Work. You purchase the vehicle and finance it using a Future Value Financing contract through a financial institution. The term of your finance contract is 60 months 5 years but it is amortized over 84 months 7 years. This allows you to have a lower monthly payment. Your payment schedule is structured using a consecutive monthly payment for the 60 months 5 years and a balloon payment at the end of your contract which is the amount remaining on the loan. The 2019 Santa Fe also features Safety Exit Assist a clever, industryfirst feature that helps prevent accidents by temporarily locking the rear doors when detecting vehicles or bikes approaching from behind, so that rear passengers can only exit the car when it is safe to do so. When Child Locks are active, SEA prevents the rear doors from opening if a vehicle approaching from behind is detected. SEA may not detect every vehicle and may not avoid an accident.

<http://schlammatlas.de/en/node/15644>